

HOW YOU CAN GET INVOLVED

There are many ways you can support The Whitechapel Centre. Whatever help you can give will go a long way towards helping us to carry out our work.



Donate online:
www.justgiving.com/whitechapelcentre

Donate via text: simply text ENAB01 followed by the amount you want to donate to 70070. eg. ENAB01 10 would be a donation of £10.

Fundraise: You may decide to help us in our work and to raise awareness of the needs of homeless people by organising a fundraising event or by collecting donations. Just let us know and we will help all we can.

Volunteer or share your skills: We offer a range of volunteering and befriending opportunities. Perhaps you have some time and a particular skill that you could share with others.

Service user involvement: Our "Whitechapel Altogether" service user group gets involved in all aspects of our work and helps us to shape future services. The group meets on the last Friday of every month and is open to all of our current and ex service users.

Please contact us if you would like more information on any of our projects or to make a referral.

Tel: **0151 207 7617** Fax: **0151 207 4093**

The Whitechapel Centre, Langsdale Street, Everton, Liverpool, L3 8DU

E-mail: info@whitechapelcentre.co.uk

www.whitechapelcentre.co.uk



"Since I met my support worker he's given me a lot of confidence and helped me find my flat."

We've worked as a team."
– Daniel



CONTACT US...

The Whitechapel Centre, Langsdale Street,
Everton, Liverpool, L3 8DU

Tel: **0151 207 7617** Fax: **0151 207 4093**

Download a referral form from our website:

www.whitechapelcentre.co.uk

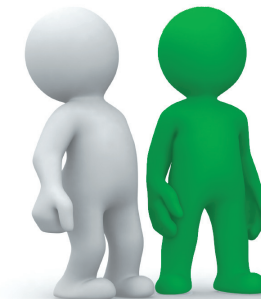
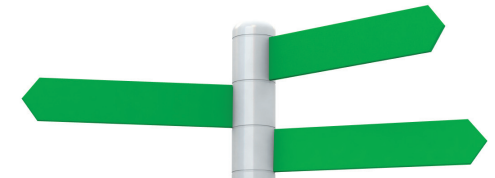


The Whitechapel Centre
Offering real solutions to housing & homelessness



The Whitechapel Centre

Offering real solutions to housing & homelessness



T: **0151 207 7617** | F: **0151 207 4093**

www.whitechapelcentre.co.uk

Registered Charity No. 1013060

ABOUT US

Since 1975 **The Whitechapel Centre** has been providing support services to some of society's most vulnerable and socially excluded people. In 1992 we established one of the country's first floating support services – a young persons' housing support service.

We have expanded considerably since our beginnings and today we employ over 60 staff and provide a comprehensive range of services that ensure each person who becomes homeless or inadequately housed in Merseyside is given the opportunity to change their situation.

As an innovative and flexible organisation we are always looking for tailored and individual answers that offer the prospect of sustainable benefits.



"Whitechapel has helped me a lot. It's helped me to get a roof over my head, I've had two good key workers and have had a lot of support from them, they support me in everything I do"

– Kenny

WHAT WE DO

Working in partnership with a wide range of other agencies, **The Whitechapel Centre** delivers long term solutions to homelessness through a variety of different projects including:

Rough Sleeper Enablement Service

An Open Access drop in operates at our Centre on Langsdale Street every weekday for those sleeping rough where breakfast, showers, and clothes washing facilities are available as well as access to support and advice.

Activity sessions are held in the morning for people who attend the Open Access Centre and are aimed at building confidence, developing skills and assisting service users to make the initial step towards breaking the cycle of rough sleeping.

In the afternoons, learning and development sessions are targeted at helping homeless and vulnerably housed people to develop the skills they need to manage a tenancy or prepare for work. A series of on site surgeries from health providers, treatment agencies and jobs agencies provide additional help and support.

Housing and Welfare Rights Team

Advice and support is available to anyone who is homeless, in a hostel, struggling in a tenancy or vulnerably housed. We help with a wide variety of issues from finding accommodation and sorting problems with welfare benefits, through to helping deal with eviction proceedings.



Street Outreach

This team offers one to one support to people who are rough sleeping, living in a squat or are threatened by homelessness. They have access to a bond scheme and more intensive support to help those with a history of rough sleeping to access private rented accommodation. During periods of cold weather the outreach team is increased and an overnight centre is provided to help prevent winter deaths.

Resettlement/Floating Support

Our team of support workers help people who are homeless, or at risk of homelessness, access the support and services they need. Each specialist project caters to different client groups and aims to help people develop the skills they need to obtain and maintain a tenancy.

Teams include:

- **Move on Move in Resettlement Service** - works with those who are identified as ready to move on and get their own independent tenancy with a period of support.
- **Harm Reduction & Dual Diagnosis** - for people with mental health/drug or alcohol issues who are homeless or at risk of losing their tenancy.

We aim to provide a seamless service, providing a balance between enabling, empowering and supporting individuals to address identified need and work towards achieving their potential.

