



WK3: Enforcement: what role can assertive outreach play in reducing rough sleeping?

Liverpool's Approach

Anne Doyle





Rough Sleeping in Liverpool



- Liverpool didn't achieve the 1998 national target of reducing rough sleeping by 2/3rds until this year
- Rough sleeping at its highest was 31 (back in 1999 / 2000)
- No one seemed to know the facts
- Rough sleepers were not being given real options to move away from the street lifestyle
- Negative impacts upon rough sleepers physical and mental health
- Negative impact upon businesses and the perception of the city centre

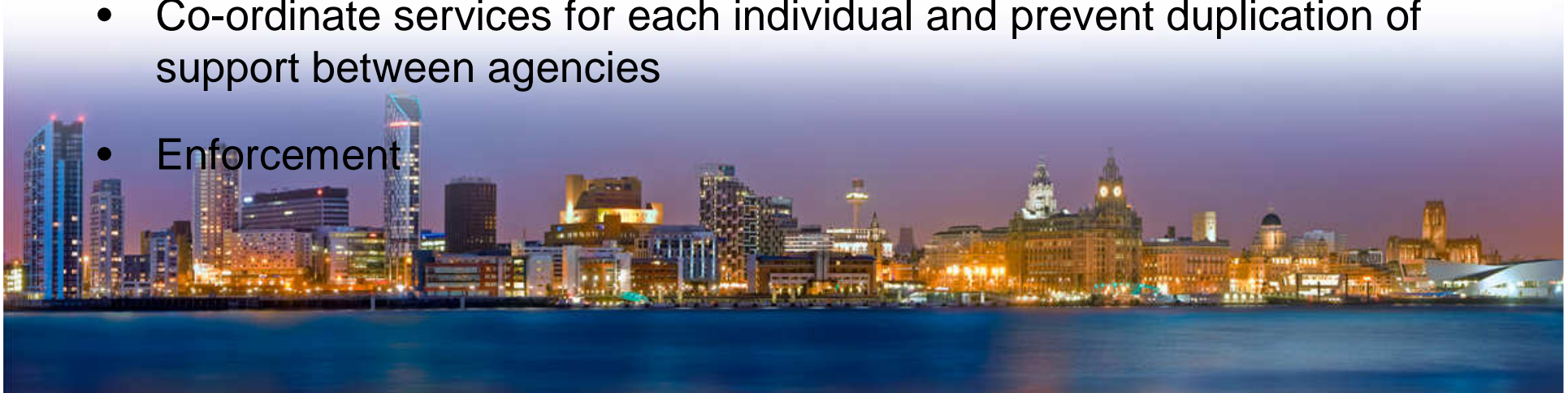




Our approach



- Identify the scale of the issue and what the actual issue is
- Agree a vision with partners and share responsibility for achieving the vision:
 - **“No one in Liverpool needs to sleep rough because they cannot access services”**
- Have a realistic, practical range of options available for rough sleepers to access
- Co-ordinate services for each individual and prevent duplication of support between agencies
- Enforcement





Identifying the scale and nature of the issue



- Research carried out in August 2008
- Development of a rough sleepers tracking group
- Development of a database to track rough sleepers
- Differentiating from street drinkers / aggressive beggars / other city centre issues





Co-ordinating support



- Having a better understanding of service's aims / roles:
- Appointing one agency to take the lead in co-ordinating the support for each rough sleeper:
- Rough Sleepers Group
- Complex Needs Panel
- Case conferences





Realistic and practical range of options available



The following services are specifically for rough sleepers and are funded by the city council:

- Rough Sleepers Outreach Service
- Cold Weather Service
- Ring Fenced Beds
- Flexible funding for personalized solutions including:
 - reconnections
 - rent deposits
 - personal care
 - practical items





Realistic and practical range of options available



- Enablement Service
- Time out Residential Programmes
- Rough sleepers tracking database
- Rough Sleepers Group
- Complex needs panel
- Access to the private rented sector pilot scheme

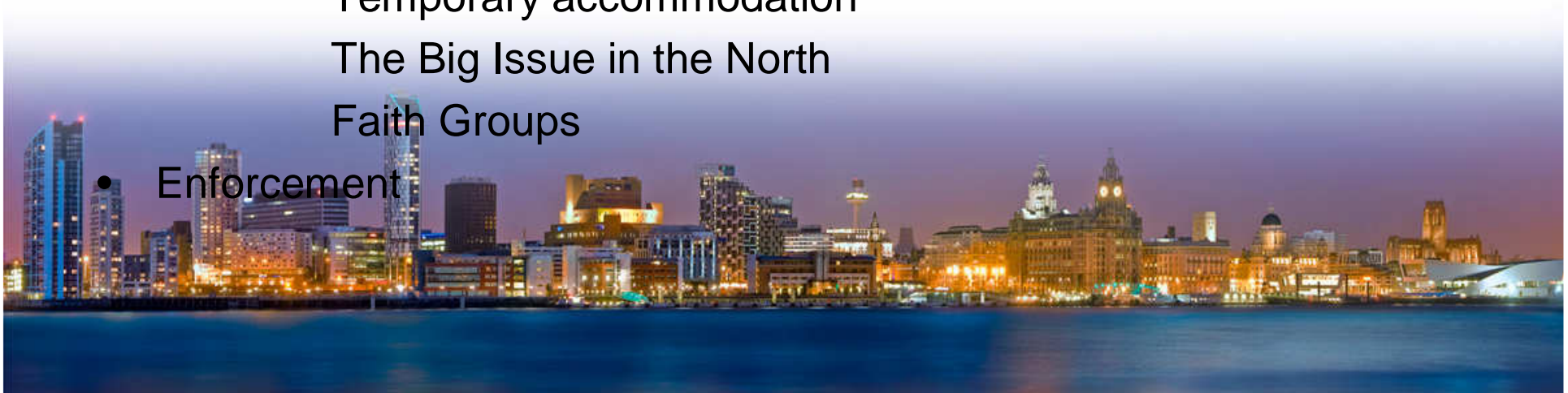
Make use of other agencies:

Temporary accommodation

The Big Issue in the North

Faith Groups

- Enforcement





Enforcement



2 types of enforcement:

1. Enforcement against businesses / owners of derelict buildings
 - making sites inaccessible
 - making sites less attractive
2. Enforcement against individual rough sleepers
 - public order offences
 - anti social behaviour orders





Results



- Rough sleeping reduced to 3 in March this year
- Consistent high level of intelligence about rough sleeping
- Co-ordinated approach to reducing rough sleeping
- No more duplication of support

